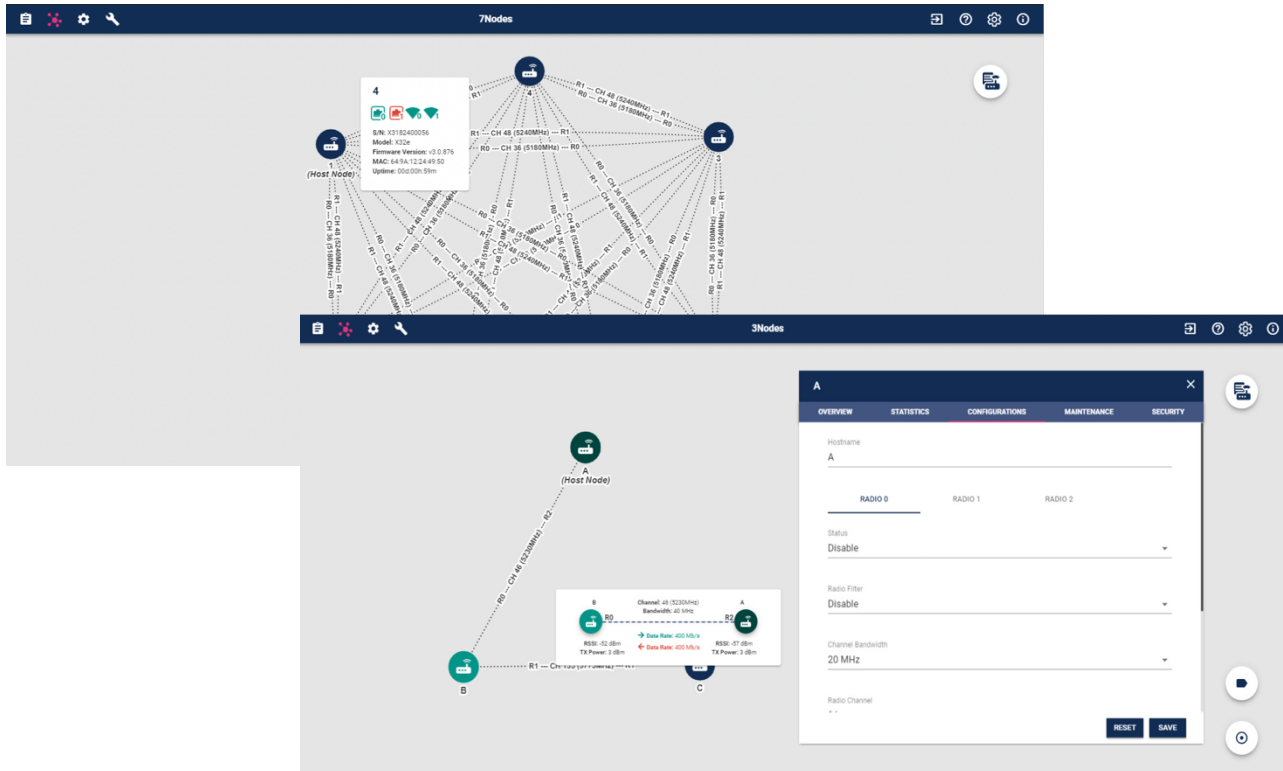


## Anywhere Node Manager A-NM



Easy and convenient setup for a fast network deployment

- Easy access with a single Management IP
- Auto-discover all nodes and detect the network topology automatically

Graphical view of the network with intuitive UI design

- Visualize links and node status in real time
- Directly make changes by clicking

Compact tool for system integrators and network engineers to manage different projects

- Portable Windows application
- Manage multiple networks with projects



## Anywhere Node Manager A-NM

Specifications			
System Features			
Installation Wizard for Windows OS			
A-NM Upgrade			
Management Features			
Quick Staging Function		Dashboard View	
Runtime Topology View of a Cluster		Device Log <sup>1</sup>	
Project Based Cluster Management		Support Custom Background Image <sup>1</sup>	
Node Management		Project Backup (Include Mgmt IP, Cert, device list) <sup>1</sup>	
View Network Statistic		Advanced Statistic (e.g. pkt drop, tx retries)	
Firmware Upgrade (Single node and Cluster wide)		Graphical indication of link bandwidth and utilization <sup>1</sup>	
Single Node Configuration			
Cluster Wide Configuration			
Configuration Backup & Restore (Single node and Cluster wide)			
Tools Utilities			
Antenna Alignment Tool (for A-OS v1.2 or above)		Node Recovery <sup>1</sup>	
Node Reboot		Throughput Test Tool <sup>1</sup>	
Software Reset Function			
System Requirements			
Hardware		Software	
Operating System	Windows 8, 10 64-bit only	Docker CE	Docker Toolbox v18.06.0-ce
CPU	Intel Core i3 or higher	VirtualBox	v5.2.16
RAM	4 GB or more	Google Chrome	Version 77.0.3865.75 or above
Storage	250 GB or more (>6 GB of available hard-disk space) <sup>2</sup>		
Network Connection	10/100/1Gig RJ45 Ethernet		

<sup>1</sup>available in the future updates

<sup>2</sup>at least 25 GB of available hard-disk space storage is required for Version 1.0

Anywhere Networks reserves the rights to change, modify, transfer or otherwise revise the publication and the product specification without notice. All scaling metrics outlined in this document are maximum supported values. The scale may vary depending on the deployment scenario and features enabled. Visit [www.anywherenetworks.com](http://www.anywherenetworks.com) or contact [sales@anywherenetworks.com](mailto:sales@anywherenetworks.com) for more details.

Version: 23 Dec 2019

